

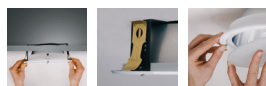
# DL 220 LOW BASIC NEW



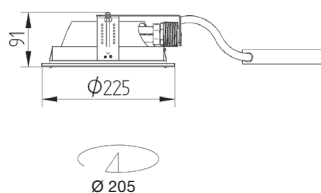
Recessed downlight for compact fluorescent lamps with flat IP44 glass. Body (standard zinc, painted black on request) and ring (standard white, other colours on request) are made of steel. Reflector made of aluminium.

Technical extras upon request:

1. Emergency supply  
- battery pack 1/2/3h (please add EM1, EM2 or EM3 after index number)
2. Compensation or passive power (capacitor).  
Please add COMPENSATION after index number.
3. Dimmable ballast EVG DIM (1-10 V).  
Please add EVG DIM after index number.
4. Digital dimmable ballast (DALI).  
Please add DALI after index number.



Easy installation – without tools. Mounting brackets. IP44 glass can be clear or matt.



Index no.	Lamp	Weight	Socket
272.220.1385V	VVG, 1x13W TC-D	1,60 kg	G24d - 1
272.220.1385E	EVG, 1x13W TC-DEL	1,45 kg	G24q - 1
272.220.1386V	VVG, 1x18W TC-D	1,60 kg	G24d - 2
272.220.1386E	EVG, 1x18W TC-DEL	1,45 kg	G24q - 2
272.220.1387V	VVG, 1x26W TC-D	1,70 kg	G24d - 3
272.220.1387E	EVG, 1x26W TC-DEL	1,50 kg	G24q - 3
272.220.1388V	VVG, 2x13W TC-D	1,90 kg	G24d - 1
272.220.1388E	EVG, 2x13W TC-DEL	1,60 kg	G24q - 1
272.220.1389V	VVG, 2x18W TC-D	1,90 kg	G24d - 2
272.220.1389E	EVG, 2x18W TC-DEL	1,60 kg	G24q - 2
272.220.1390V	VVG, 2x26W TC-D	2,10 kg	G24d - 3
272.220.1390E	EVG, 2x26W TC-DEL	1,60 kg	G24q - 3

IP44

230 V  
50 Hz

