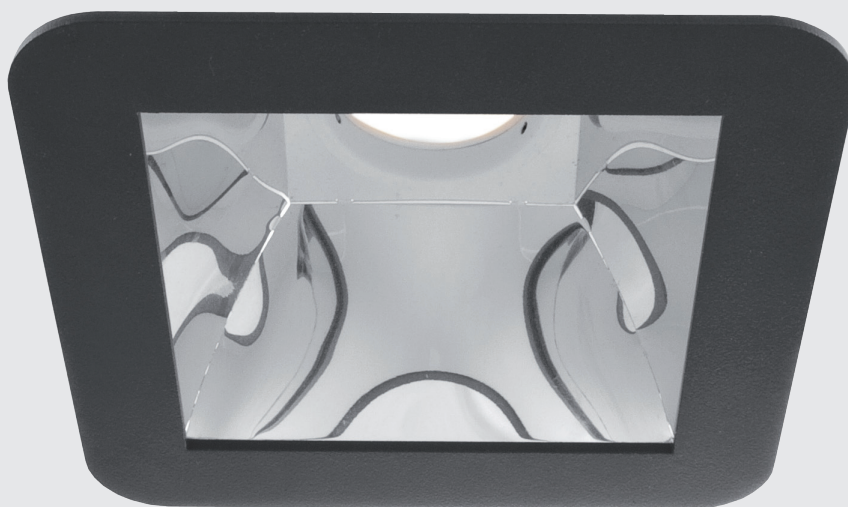
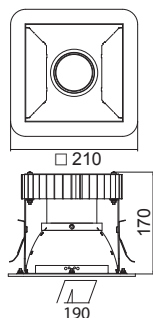


# DLK 210 FORTIMO DQ



Recessed LED luminaire. Body is made of steel and aluminum and it is available in all RAL colours. Light source - Philips, Osram or Tridonic LED module. Standard EVG ballast, DALI or Touch Dali version on request. Passive cooling, optional IP44 diffuser.



Index no.	Lumen output	Wattage	Colour temp.	Colour rendering index	Lifetime	Weight
With integrated AC driver						
005266.1100/830	1100 lm	12 W	3000 K	Ra > 80	50.000 h	1,75 kg
005266.1100/840	1100 lm	12 W	4000 K	Ra > 80	50.000 h	1,75 kg
005266.2000/830	2000 lm	28 W	3000 K	Ra > 80	50.000 h	1,75 kg
005266.2000/840	2000 lm	26 W	4000 K	Ra > 80	50.000 h	1,75 kg
005266.3000/830	3000 lm	43 W	3000 K	Ra > 80	50.000 h	1,75 kg
005266.3000/840	3000 lm	39 W	4000 K	Ra > 80	50.000 h	1,75 kg
With AC/DC driver						
003781.1100/830	1100 lm	12 W	3000 K	Ra > 80	50.000 h	1,95 kg
003781.1100/840	1100 lm	12 W	4000 K	Ra > 80	50.000 h	1,95 kg
003781.2000/830	2000 lm	20 W	3000 K	Ra > 80	50.000 h	1,95 kg
003781.2000/840	2000 lm	20 W	4000 K	Ra > 80	50.000 h	1,95 kg
003781.3000/830	3000 lm	30 W	3000 K	Ra > 80	50.000 h	1,95 kg
003781.3000/840	3000 lm	30 W	4000 K	Ra > 80	50.000 h	1,95 kg

\* Different lumen output or wattage available on request.  
 \* System power consumption (LED module & driver) depends on components used. Contact us for detailed information.

