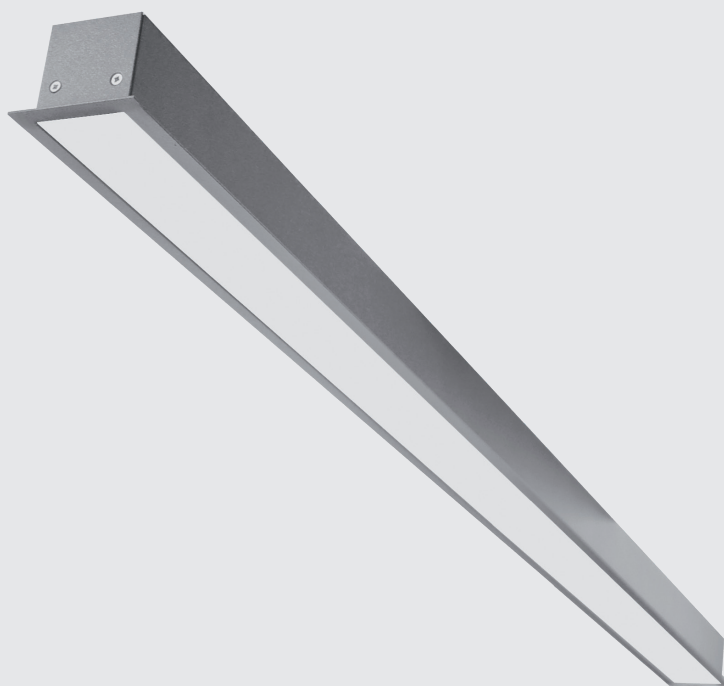


PROFI 60 R LED LINE

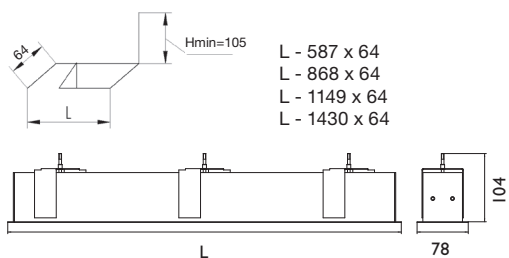


Recessed LED luminaire.

- Opal or acrylic diffuser
- Light source - Philips, Osram or Tridonic LED module.
- Standard EVG ballast, Touch DALI version on request.
- Body made of aluminium profile and available in all RAL colours
- This luminaire can be mounted directly to the ceiling or pendent on steel wires and can be connected in long lighting lines.
- We can prepare it in different lengths and shapes on request.
- High quality, energy efficient white LED light with CRI 80.

Perfect replacement for conventional T5 luminaires in:

- Offices
- Public buildings
- Hotel lobbies and receptions
- Retail



Index no.	Lumen output	Wattage	Colour temp.	Colour rendering index	Lifetime	Length	Weight
003500.LL2200/830	2200 lm	15 W	3000 K	Ra > 80	50.000 h	601 mm	1,50 kg
003500.LL2200/840	2200 lm	15 W	4000 K	Ra > 80	50.000 h	601 mm	1,50 kg
003500.LL3300/830	3300 lm	23 W	3000 K	Ra > 80	50.000 h	882 mm	2,00 kg
003500.LL3300/840	3300 lm	23 W	4000 K	Ra > 80	50.000 h	1163 mm	2,00 kg
003500.LL4400/830	4400 lm	30 W	3000 K	Ra > 80	50.000 h	1163 mm	2,50 kg
003500.LL4400/840	4400 lm	30 W	4000 K	Ra > 80	50.000 h	1444 mm	2,50 kg
003500.LL5500/830	5500 lm	38 W	3000 K	Ra > 80	50.000 h	1444 mm	3,50 kg
003500.LL5500/840	5500 lm	38 W	4000 K	Ra > 80	50.000 h	1163 mm	3,50 kg
003500.LL8000/830	8000 lm	58 W	3000 K	Ra > 80	50.000 h	1163 mm	2,50 kg
003500.LL8000/840	8000 lm	58 W	4000 K	Ra > 80	50.000 h	1163 mm	2,50 kg
003500.LL10000/830	10000 lm	73 W	3000 K	Ra > 80	50.000 h	1444 mm	3,50 kg
003500.LL10000/840	10000 lm	73 W	4000 K	Ra > 80	50.000 h	1444 mm	3,50 kg

* Ra > 90 modules, different lumen output or wattage available on request.

* System power consumption (LED module & driver) depends on components used. Contact us for detailed information.

* Tunable White LED modules on request.

