

Tře LED

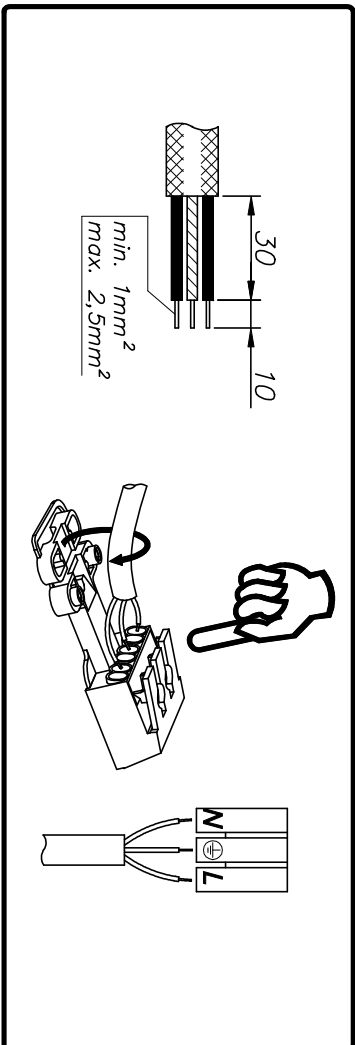
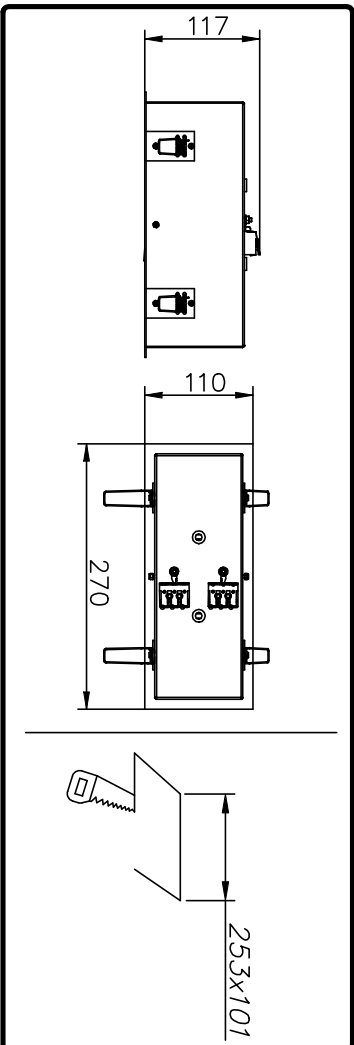
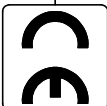
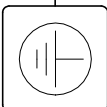
Instrukcja montażu

Installation Instructions
Instructions de montage
Montageanleitung

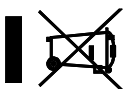
ИНСТРУКЦИЯ МОНТАЖА

IP20

230 V
50 Hz



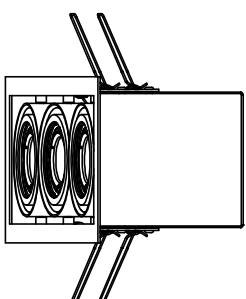
- PL – Wyłączyć zasilanie przed wymianą lampy;
- UK – Disconnect the unit before changing the lamp;
- F – Débrancher l'appareil avant de changer la lampe;
- D – Von den Auswechsellampen die Leuchte von der Netzspannung trennen.



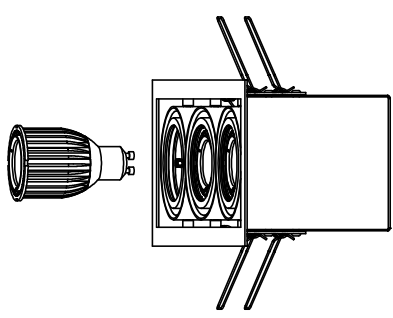
Aura Light Int.
Amnåsgatan 1
SE-371 23 Korsholma
Sweden
www.auralight.com

 AURA LIGHT

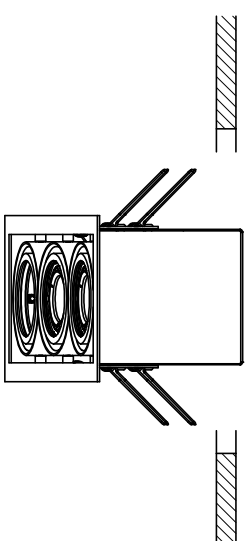
1



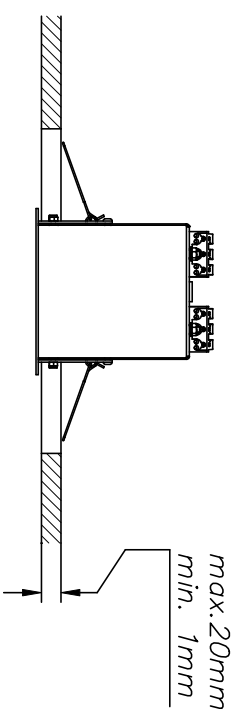
2



3



4



Aura Light Int.
Amnåsgatan 1
SE-371 23 Korsholma
Sweden
www.auralight.com

 AURA LIGHT