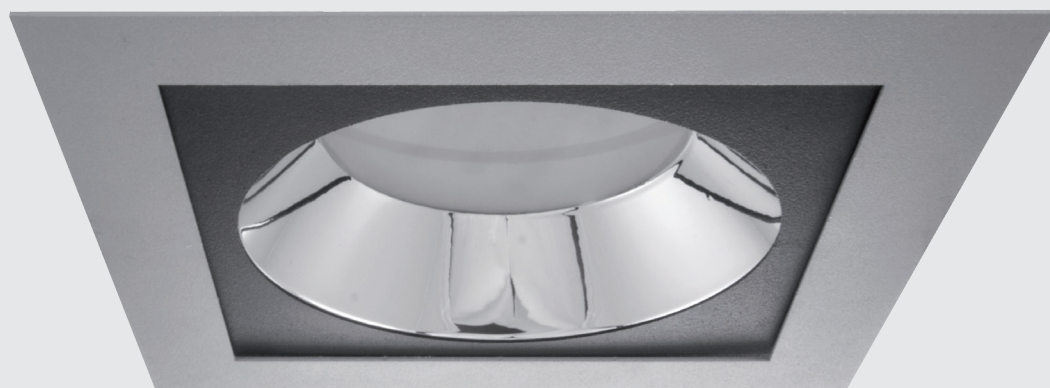
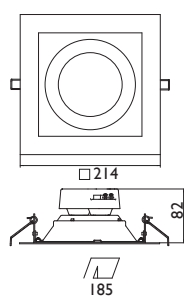
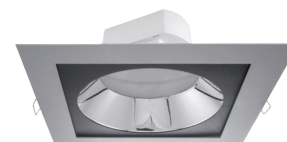


# UNO ECO LED



Recessed LED downlights.  
 Body is made of steel and aluminium and can be painted in any RAL colour.  
 Silver glossy reflector in standard, white painted on request.



Index no.	Lumen output	Wattage	Colour temp.	Colour rendering index	Lifetime	Weight
004380.2000/830	2000 lm	26 W	3000 K	Ra > 80	30.000 h	0,70 kg
004380.2000/840	2000 lm	26 W	4000 K	Ra > 80	30.000 h	0,70 kg

IP20
230 V  
50 Hz
F
⊕
CE