

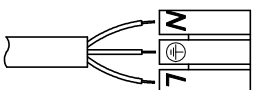
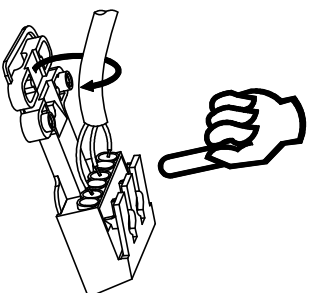
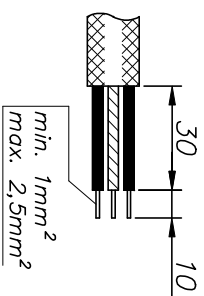
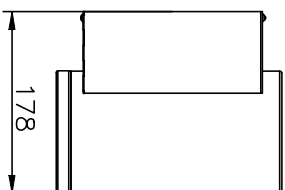
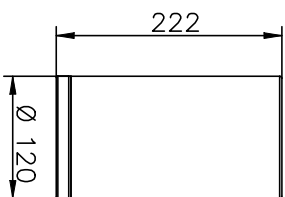
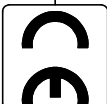
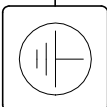
WALL LED SPOT

Instrukcja montażu

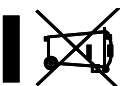
Installation Instructions
Instructions de montage
Montageanleitung
ИНСТРУКЦИЯ МОНТАЖА

IP20

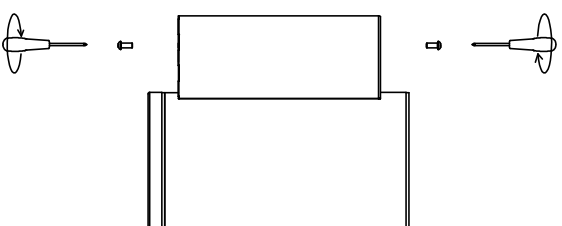
230V
50 Hz



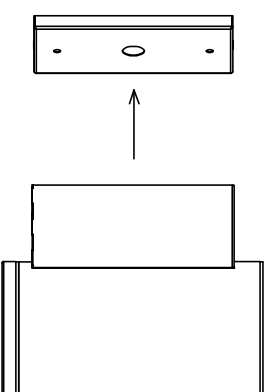
- PL – Wyłączyć zasilanie przed wymianą lampy;
- UK – Disconnect the unit before changing the lamp;
- F – Débrancher l'appareil avant de changer la lampe;
- D – Von den Auswechsellern der Lampe die Leuchte von der Netzspannung trennen.



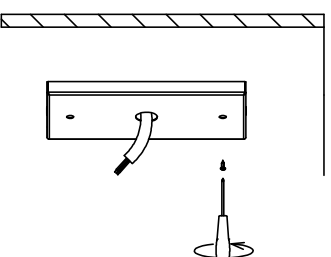
1



2



3



4

